

Super Magic Eraser

Adobe Illustrator script
Created by mai-tools.com



User Guide

Introduction

Super Magic Eraser is a script for Adobe Illustrator which automatically cuts and deletes vector objects outside Artboard.

This script deletes paths and shapes outside Artboard quickly and easily, while not affecting your artwork inside artboard. Cuts linear and radial gradient correctly. Keeps illustrations editable after usage with accurate and clean results.

Works with vector files containing several Artboards.

Perfect for cropping seamless patterns and vector illustrations for microstocks.

Useful for deleting graphic garbage on margins and preparing for printing.

Fully automatic process. No need to know anything. Save yourself time and stress. Just run Super Magic Eraser Script and enjoy.

Compatibility: Adobe Illustrator CS6, Adobe Illustrator CC

Script version is universal for Windows and Macintosh OS.

You can buy Super Magic Eraser script for only **\$ 7** right now!

Visit our website: **mai-tools.com**

Warning

Super Magic Eraser script operates with simple vector shapes and paths. It won't touch Blends, Live Paint Groups, Brushes, Symbols, Text Fields, Meshes or other complicated objects. Please expand your vector artwork (Object > Expand or Expand Appearance) before running the script.

The script can freeze your computer if your machine runs slowly. Also may require additional time to run if your vector artwork consists of many large objects.

To avoid incidents, save your vector artwork in separate file before running the script.

Super Magic Eraser script works only with Adobe Illustrator CC and Adobe Illustrator CS6. Previous versions of Adobe Illustrator are not supported.

Installation

Take the script file (*super_magic_eraser_v2.jsx*) and drop it to the script folder of your Adobe Illustrator. Location of the script folder depends on your Adobe Illustrator version and system configuration.

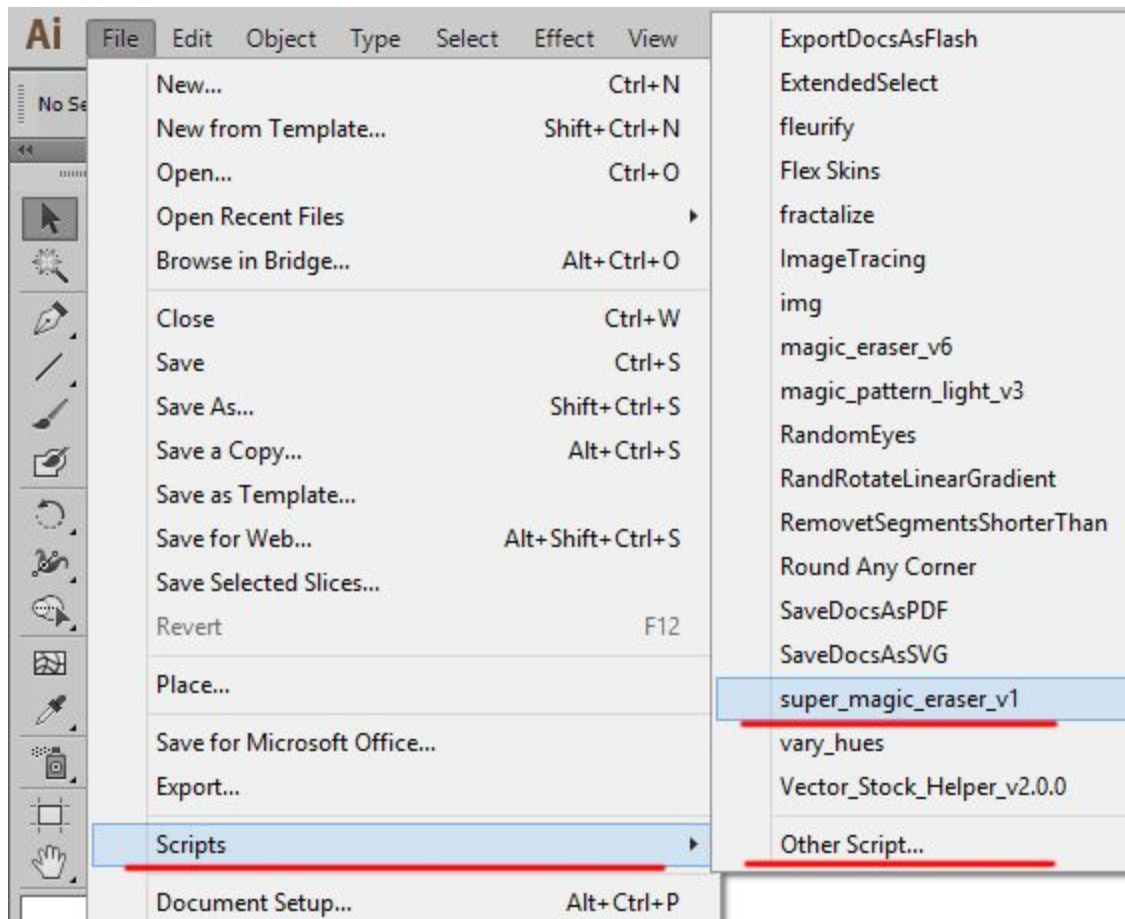
For Windows it might be:

C > Program Files > Adobe > Adobe Illustrator (your version) > Presets > en_GB > Scripts

For Macintosh it might be:

Applications > Adobe > Adobe Illustrator (your version) > Presets > en_GB > Scripts

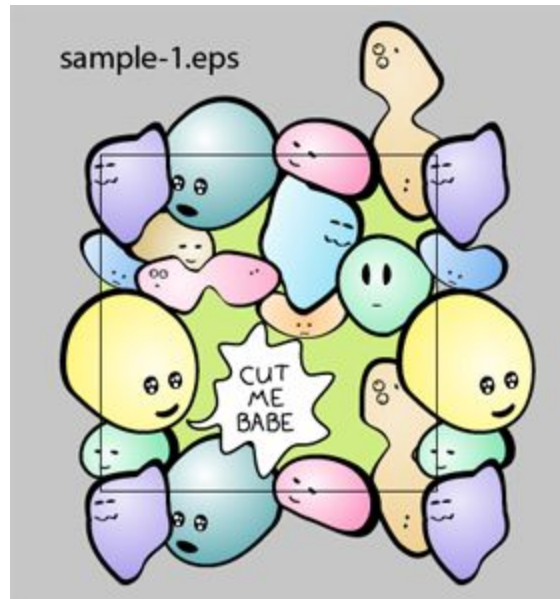
Then run Adobe Illustrator. You can find the script in the main menu (*File > Scripts > super_magic_eraser_v2*)



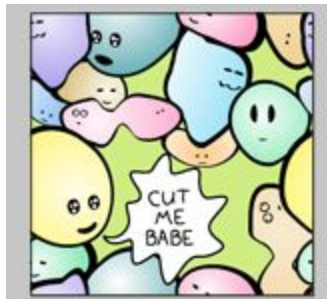
You can also run the script without installation. Go to *File > Scripts > Other Script* (Ctrl+F12). Then open the script file on your computer.

Usage in Adobe Illustrator

Open or create any vector illustration. You can also use *sample-1.eps* file from your archive.

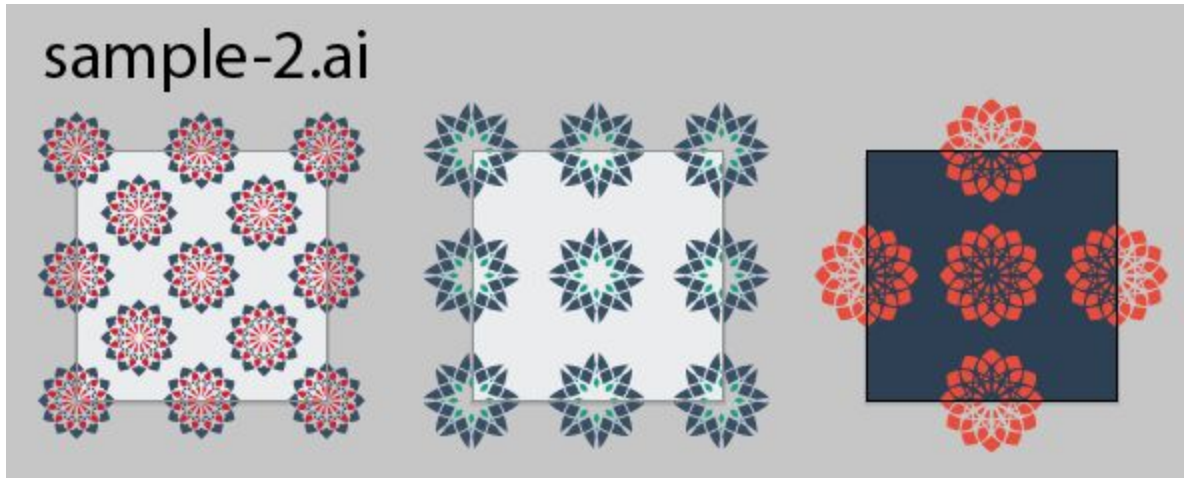


Run the script Super Magic Eraser. Press the Start button.
The script will cut and delete all vector shapes and paths outside Artboard. Finally you get the result.



Usage with several Artboards

Open or create any vector illustration with several Artboards. You can also use *sample-2.ai* file from your archive.

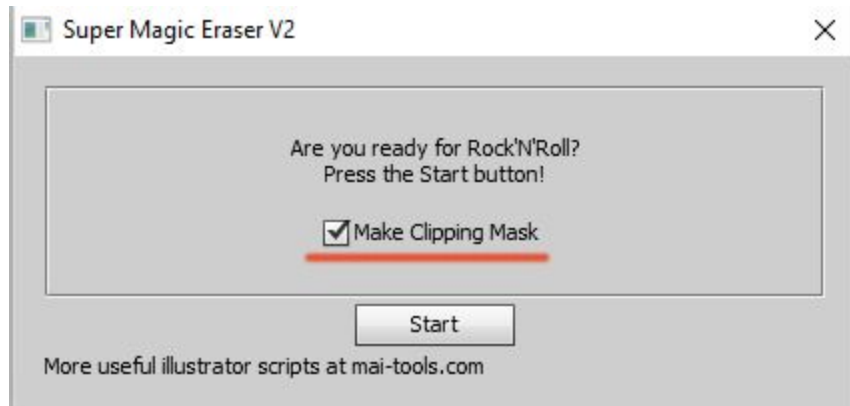


Run the script and press Start button. It will cut and delete all vector shapes and paths outside all Artboards.

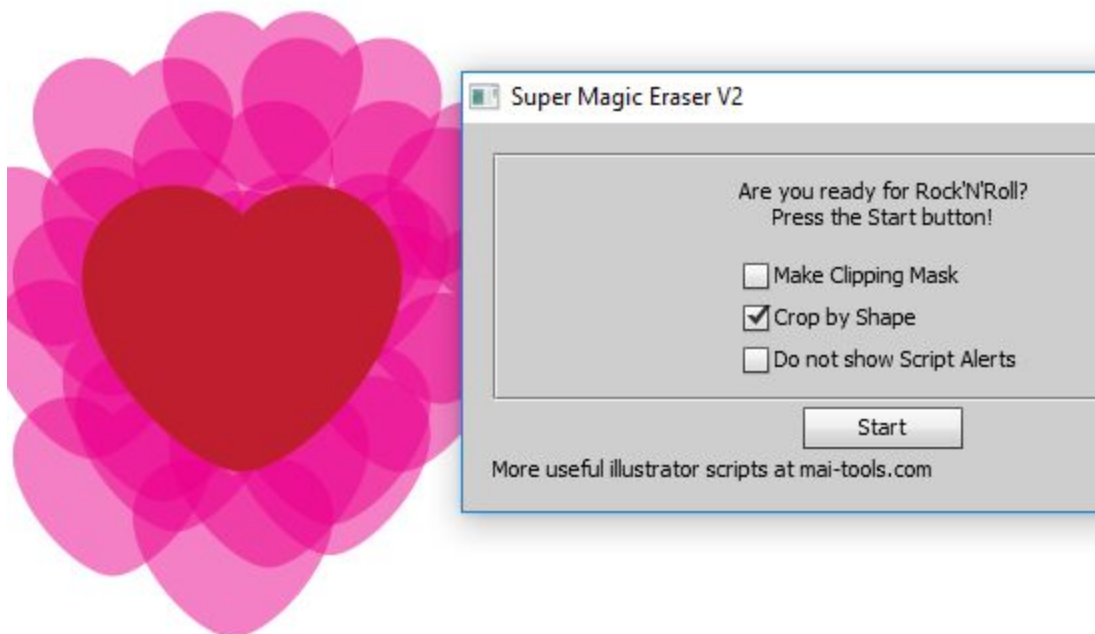


Make Clipping Mask

There is a new feature in Super Magic Eraser. The script will create masks instead of crop if **Make Clipping Mask** checkbox is selected.



Crop by Shape



There is a new feature in Super Magic Eraser. The script will crop by top shape if **Crop by Shape** checkbox is selected. The script can crop masked objects (Clipping Mask). Just select Clipping Mask and use **Crop by Shape** option.



Contact

Feel free to write support@mai-tools.com

Website mai-tools.com