

Stock Master Pro

Adobe Illustrator script
Created by mai-tools.com



User Guide

Introduction

Stock Master Pro is a script for Adobe Illustrator which automatically prepares and saves vector files for microstocks.

The script scans a vector file and fixes mistakes such as open paths, ghost shapes, bitmap, active brushes, symbols, effects, text, etc.

Stock Master Pro automatically saves vector file as EPS-10, EPS-8, Ai. And exports it as JPEG and PNG. You can work with several Artboards and save them all with the script.

You can set the width and height for each file type.

Batch processing is available. Stock Master Pro script can processed several files from one folder.

Perfect for preparing vector illustrations for microstocks: Shutterstock, Adobe Stock, iStock, Depositphotos, Dreamstime, Bigstock, 123rf, Vectorstock, Colourbox, Canstock, Veer and others.

The process is fully automatic. The script can be configured for your own work task.

Compatibility: Adobe Illustrator CS6, Adobe Illustrator CC

Script version is universal for Windows and Macintosh OS.

Buy Stock Master Pro script for **\$14** right now!

Visit our website: **mai-tools.com**

Installation

Drag and drop the script file (*StockMasterPro.jsx*) and the template file (*template_transparency.eps*) to the script folder of your Adobe Illustrator. Location of the script folder depends on your Adobe Illustrator version and system configuration.

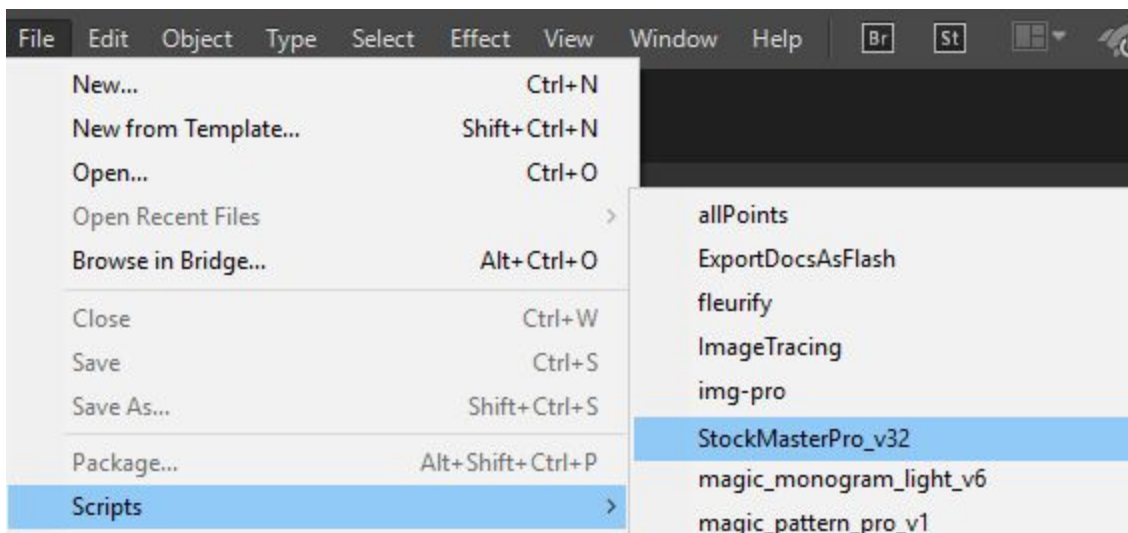
For Windows it might be:

C > Program Files > Adobe > Adobe Illustrator (your version) > Presets > en_GB > Scripts

For Macintosh it might be:

Applications > Adobe > Adobe Illustrator (your version) > Presets > en_GB > Scripts

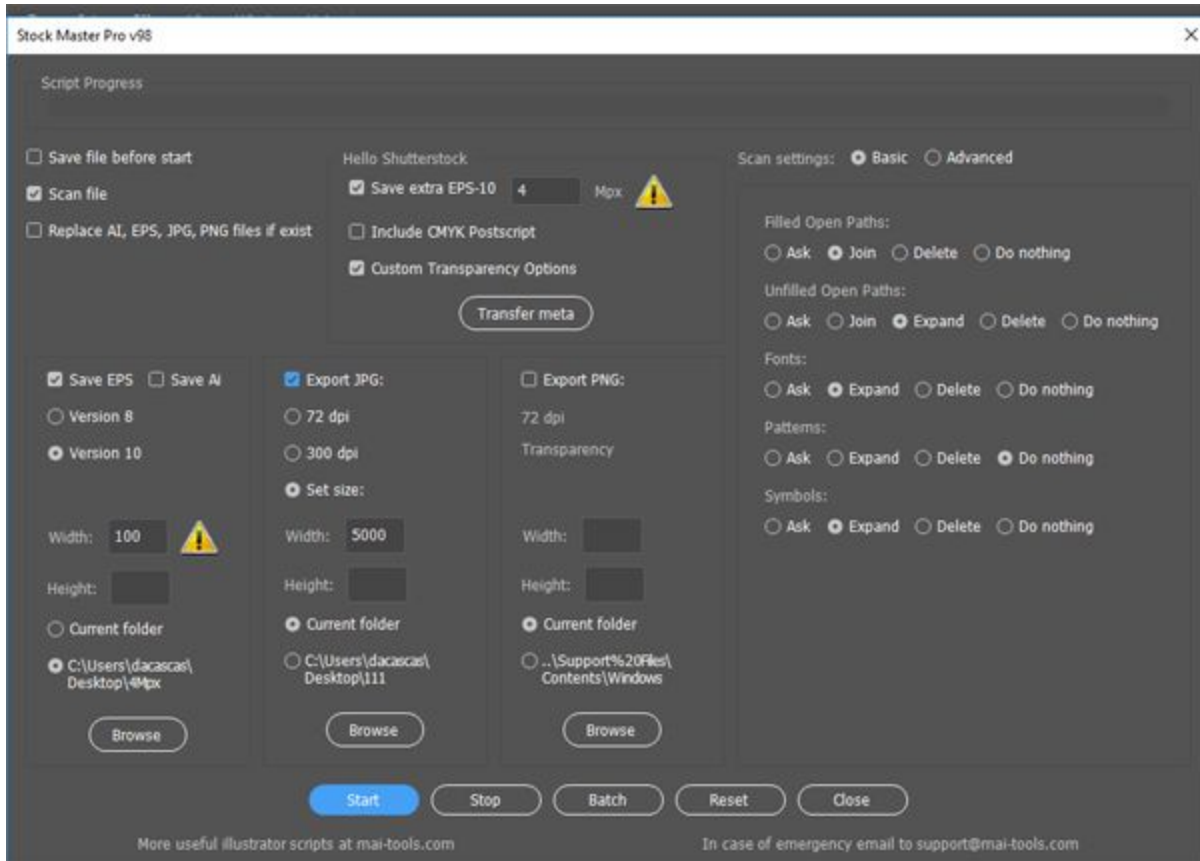
Then run Adobe Illustrator. You can find the script in the main menu *File > Scripts*.



You can also run the script without installation. Go to *File > Scripts > Other Script (Ctrl+F12)*. Then open the script file on your computer.

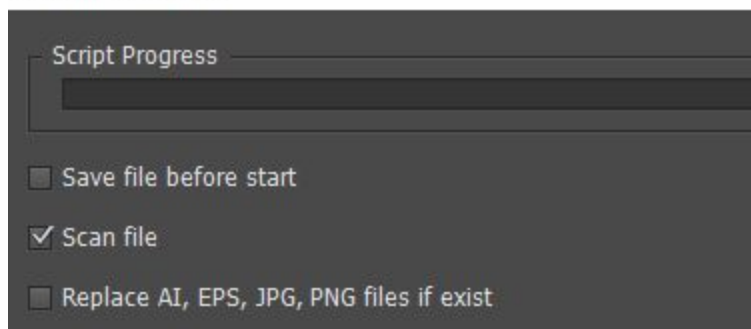
Usage in Adobe Illustrator

Open or create a vector illustration (one or several Artboards). Save it as Ai file before running the script (*Ctrl+S*). Then run the script Stock Master Pro.



A window with options will pop up. It is necessary to set the settings before starting the script. You can find all options in this User Guide.

Stock Master Pro v32



Save file before start - If you want save your file before starting the script select this option.

Scan file - the script scans a vector file and fixes mistakes.

Replace AI, EPS, JPG, PNG... - the script replaces your files while saving.

The image shows a settings panel with three columns. The first column is for 'Save EPS' and 'Save Ai', with radio buttons for 'Version 8' and 'Version 10'. The second column is for 'Export JPG', with radio buttons for '72 dpi', '300 dpi', and 'Set size'. The third column is for 'Export PNG', with radio buttons for '72 dpi' and 'Transparency'. Each column has input fields for 'Width' and 'Height', and a 'Browse' button. A warning icon is present next to the 'Width' field in the first column.

Save EPS and Save Ai - the script saves your file as EPS and Ai (each Artboard separately). You can choose 8 or 10 version for EPS and Ai (8 version does not support transparency and blending modes)..

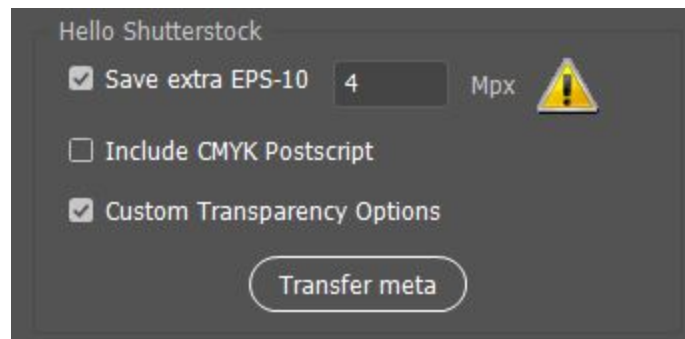
Export JPG - the script saves your file as JPEG (each Artboard separately). You can choose resolution 72 dpi or 300 dpi (you can have problems with 300 dpi export if your computer runs slowly). Select **Set size** option if you want to set the size for the JPEG file.

Export PNG - the script saves your file as PNG with transparent background and resolution 72 dpi (each Artboard separately).

Width and Height - you can set width and height for each file type. **Warning:** leave empty for original sizes.

Browse - you can set the directory for saving files.

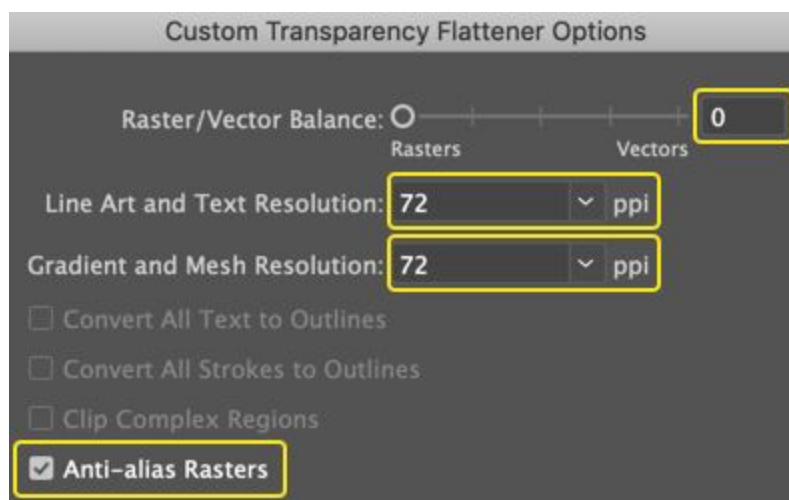
Saving options for Shutterstock:



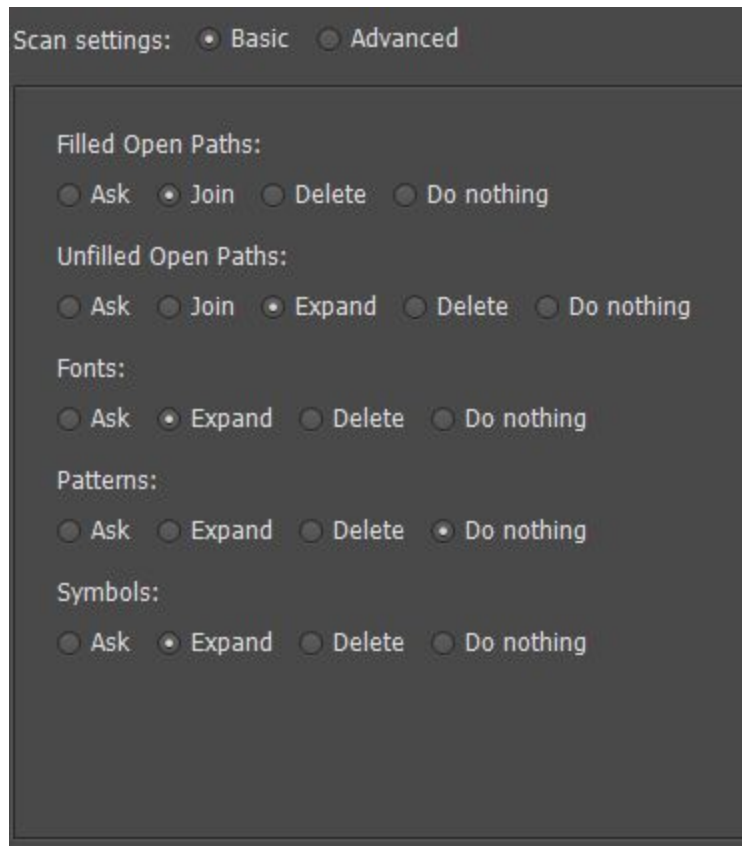
Save extra EPS-10 - the script saves your file as EPS 10 version (each Artboard separately). Files are saved to the folder you selected in the options **Browse** in the **Save EPS and Save Ai**. You can set resolution 4 Mpx or higher for EPS file. **Warning:** leave empty Mpx value for original sizes.

Include CMYK PostScript - this is a default option **Include CMYK PostScript in RGB Files** for EPS saving of your Adobe Illustrator. Uncheck this option if you don't want to include CMYK PostScript in your EPS files (recommended for Shutterstock).

Custom Transparency Options - the script saves files with transparency settings as in the picture below. Check this option if your files has transparency or blending modes. This option will reduce the file size (recommended for Shutterstock).



Transfer meta - the script copies the metadata from JPEG files to EPS files. Files must have same names and be in the one folder. Press the **Transfer meta** button and choose this folder. **Warning:** this option works properly with EPS-10 only.



Scan settings - activate this option and the script scans a vector file and fixes mistakes such as open paths, ghost shapes, bitmap, active brushes, symbols, effects, text, etc.

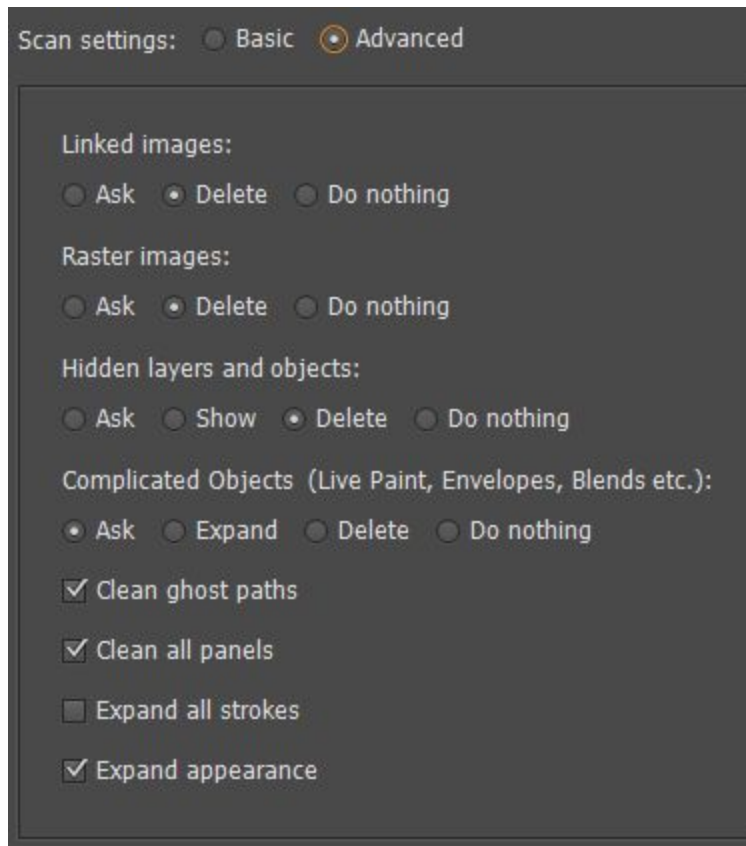
Filled Open Paths - the script searches and fixes filled open paths.

Unfilled Open Paths - the script searches and fixes unfilled open paths.

Fonts - the script searches and fixes fonts.

Patterns - the script searches and fixes pattern fills.

Symbols - the script searches and fixes symbols.



Linked images - the script searches and fixes linked images.

Raster images - the script searches and fixes raster images.

Hidden layers and objects - the script searches and fixes hidden layers and objects.

Complicated Objects - the script searches and fixes complicated objects (Live Paint Groups, Symbol Instance Sets, Envelopes, Blends etc.)

Clean ghost paths - delete ghost shapes (unpainted objects) and isolated dots.

Clean all panels - delete all unused items from Swatches, Brushes, Symbols, Styles panels.

Expand all strokes - the script expands all strokes.

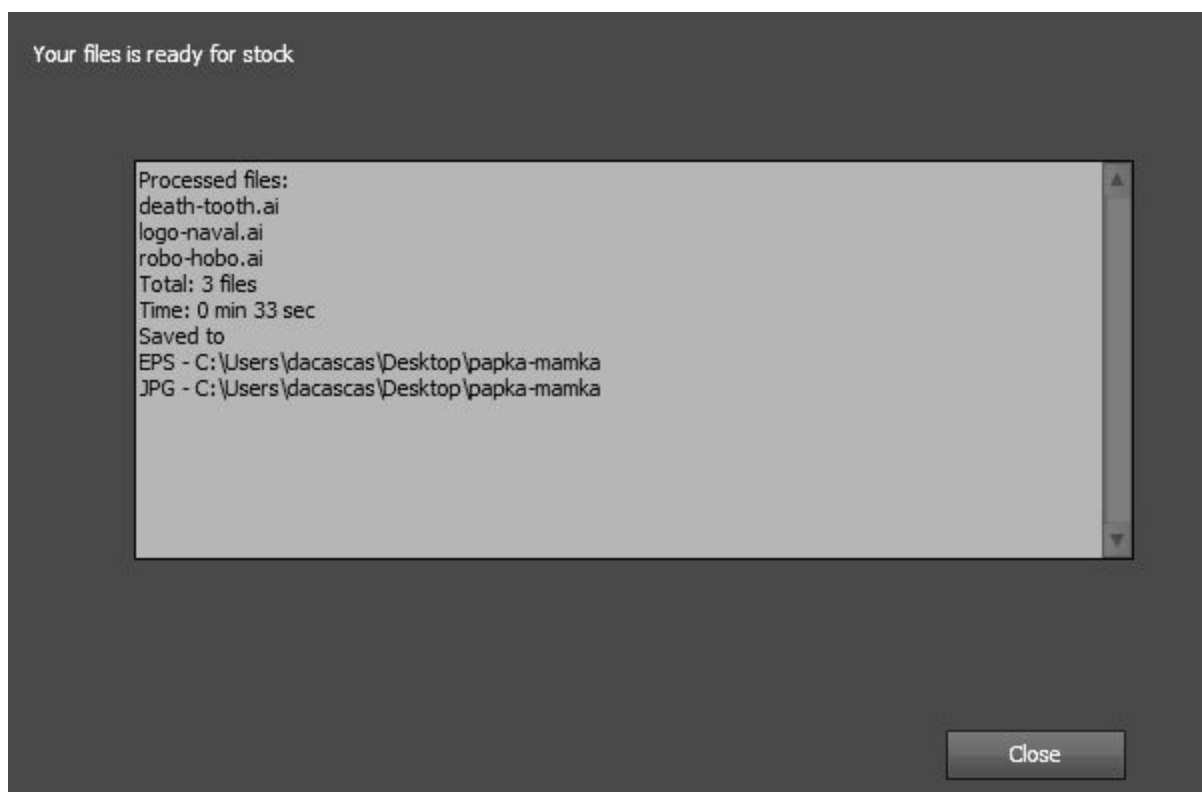
Expand Appearance - expand complicated Appearance to simple vector shapes (effects, brushes etc.)

Unlock (default) - unlock all layers and objects.

Delete Guides (default) - all guides are removed.

Delete Empty Layers (default) - all layers without objects are removed.

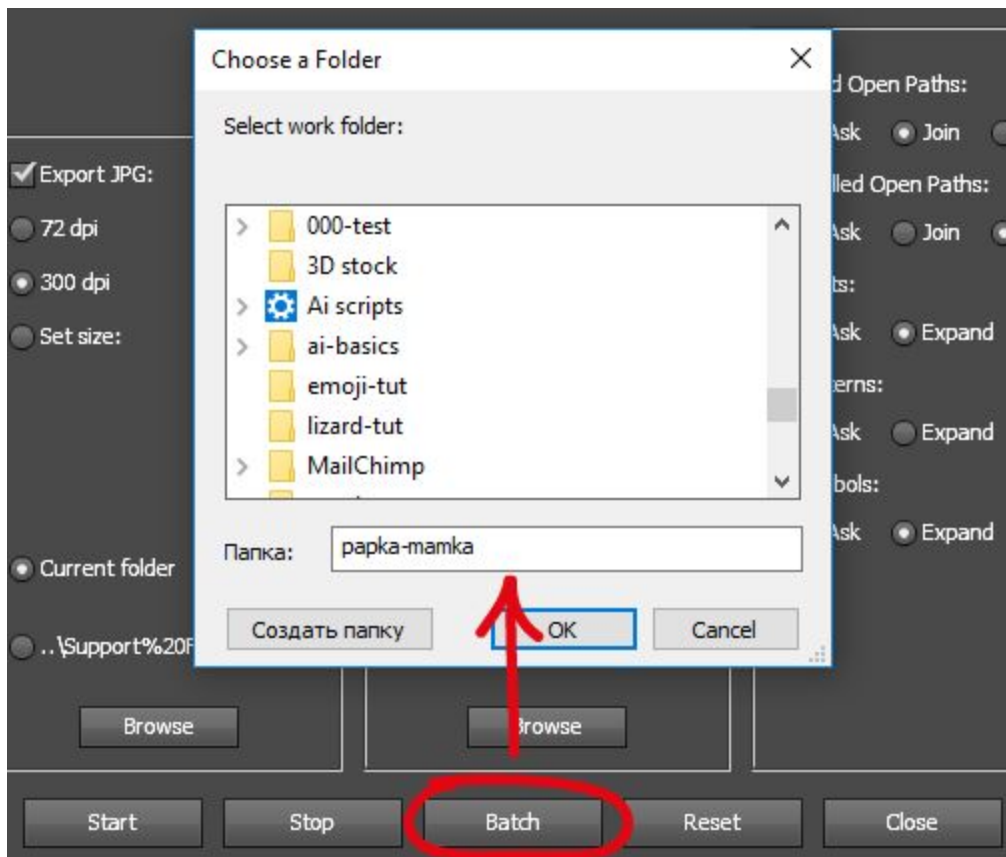
Click the *Start* button in the script window. The script will start scanning your file. A dialog window will appear if it is necessary to fix mistakes in your vector illustration. You may close the window to fix the mistake manually. Finally the script will save all files as you specified in the settings.



You can see the directory of files and all details in the script report. Press the *Reset* button if you want to reset all settings. Press the *Stop* button if you want to make emergency stop (has a delay).

Batch processing

Batch processing is available in new version of Stock Master Pro. The script can processed several files from one folder. Press the *Batch* button and select the folder with your files. File formats might be Ai, EPS, SVG, PDF (vector files).



Contact us

E-mail: [**support@mai-tools.com**](mailto:support@mai-tools.com)

Web-site: [**mai-tools.com**](http://mai-tools.com)