

Magic Pattern Light

Adobe Illustrator script
Created by mai-tools.com



User Guide

Introduction

Magic Pattern Light is a script for Adobe Illustrator which automatically creates seamless patterns from any sample of your art.

There are ten different templates of patterns inside.

Works with any size of the Artboard. It doesn't matter what kind of Artboard you have: square or rectangle.

No effect - 100% vector paths and shapes.

Quickly and easily makes patterns on the Artboard by one click.

Perfect for creating seamless patterns for microstocks.

Useful for polygraphy and textile design.

Compatibility: Adobe Illustrator CS5, Adobe Illustrator CS6, Adobe Illustrator CC.

Script version is universal for Windows and Macintosh OS.

You can buy Magic Pattern Light script for only **\$ 5** right now!

Visit our website: **mai-tools.com**

Installation

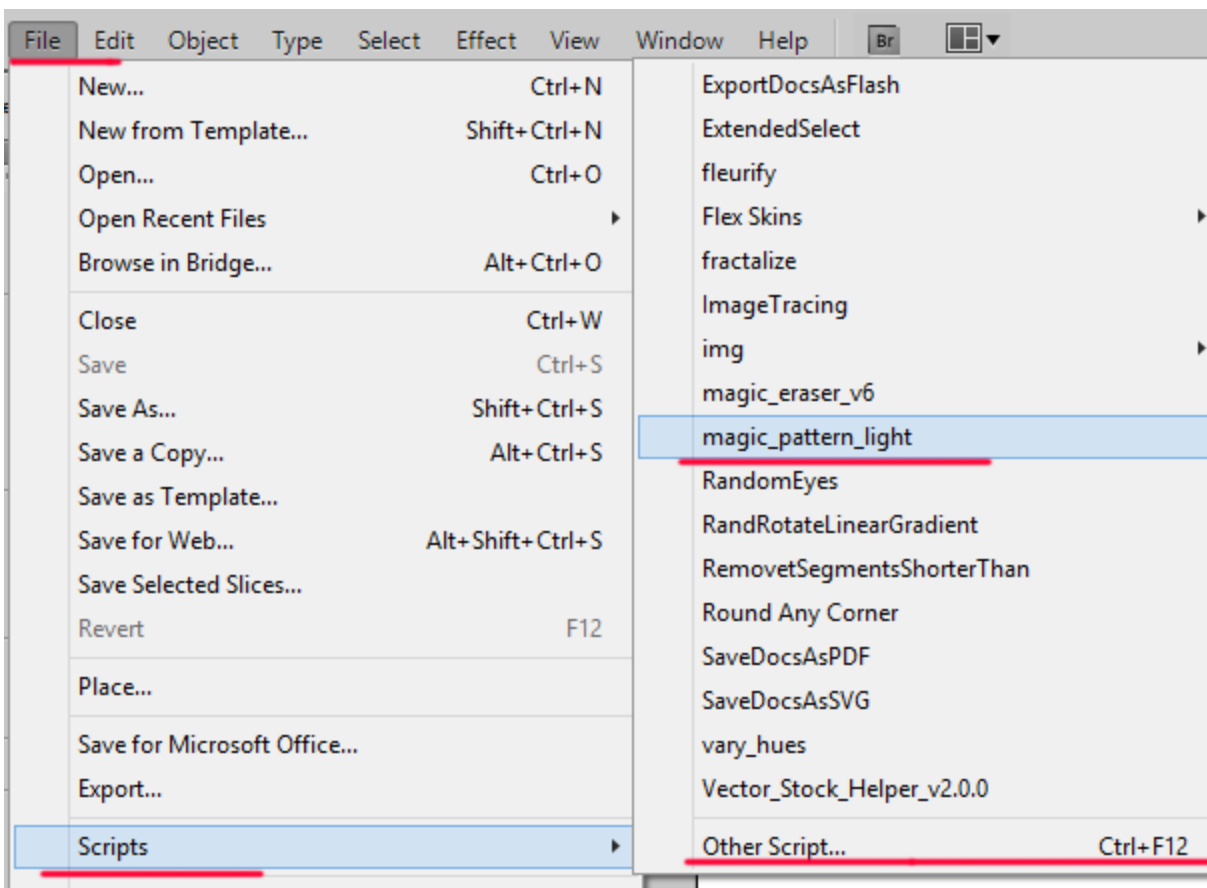
Take the script file (*magic_pattern_light.jsx*) and image folder (img) and drop them to the script folder of your Adobe Illustrator. Location of the script folder depends on your Adobe Illustrator version and system configuration.

img	27.12.2014 19:43
magic_pattern_light.jsx	26.12.2014 18:12

For example, for Windows Adobe Illustrator CC (English version) it can be: *C:\Program Files\Adobe\Adobe Illustrator CC 2014\Presets\en_GB\Scripts*

For Adobe Illustrator CS6 (English version) for Windows it can be:
C:\Program Files\Adobe\Adobe Illustrator CS6 (64 Bit)\Presets\en_GB\Scripts

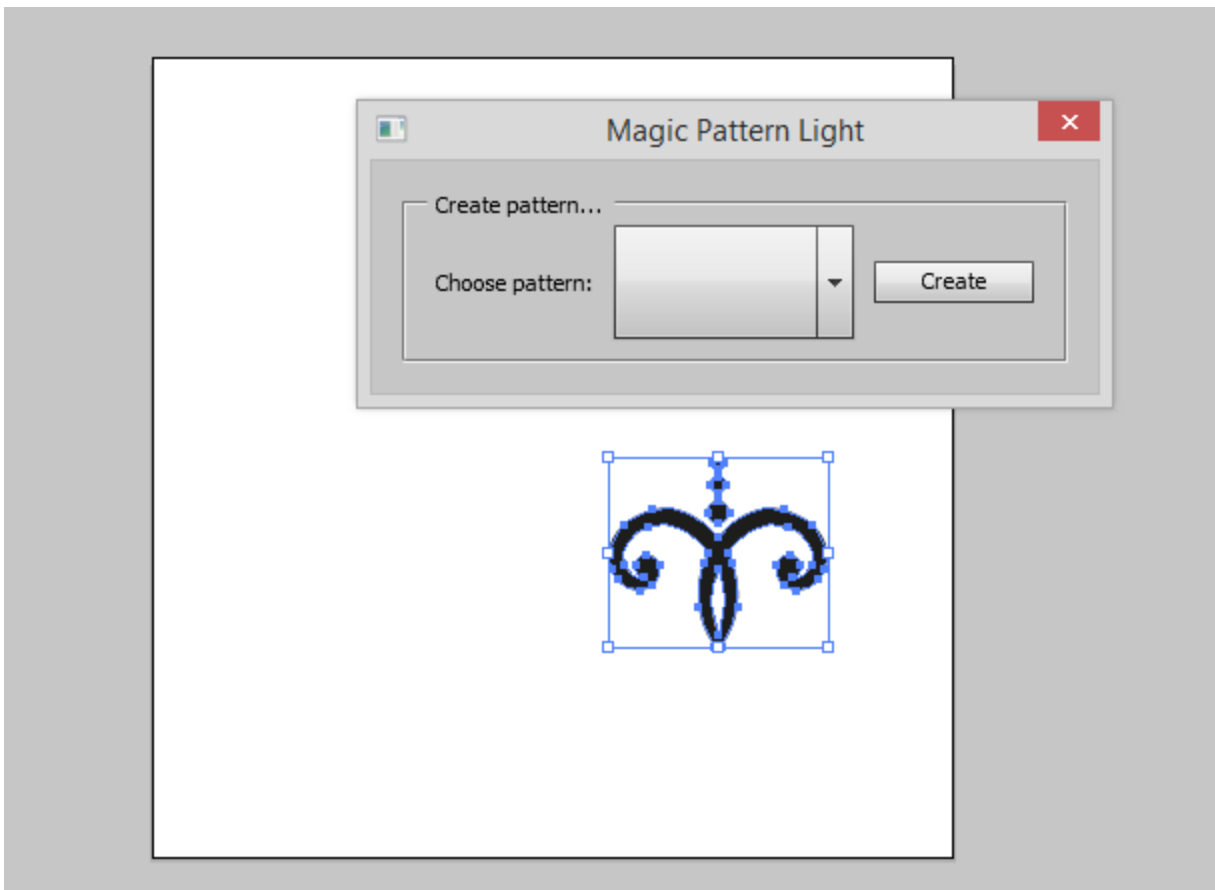
Then run Adobe Illustrator. You can find the script in the main menu (*File > Scripts > magic_pattern_light*). You can also run the script without installation. Go to *File > Scripts > Other Script* (Ctrl+F12).



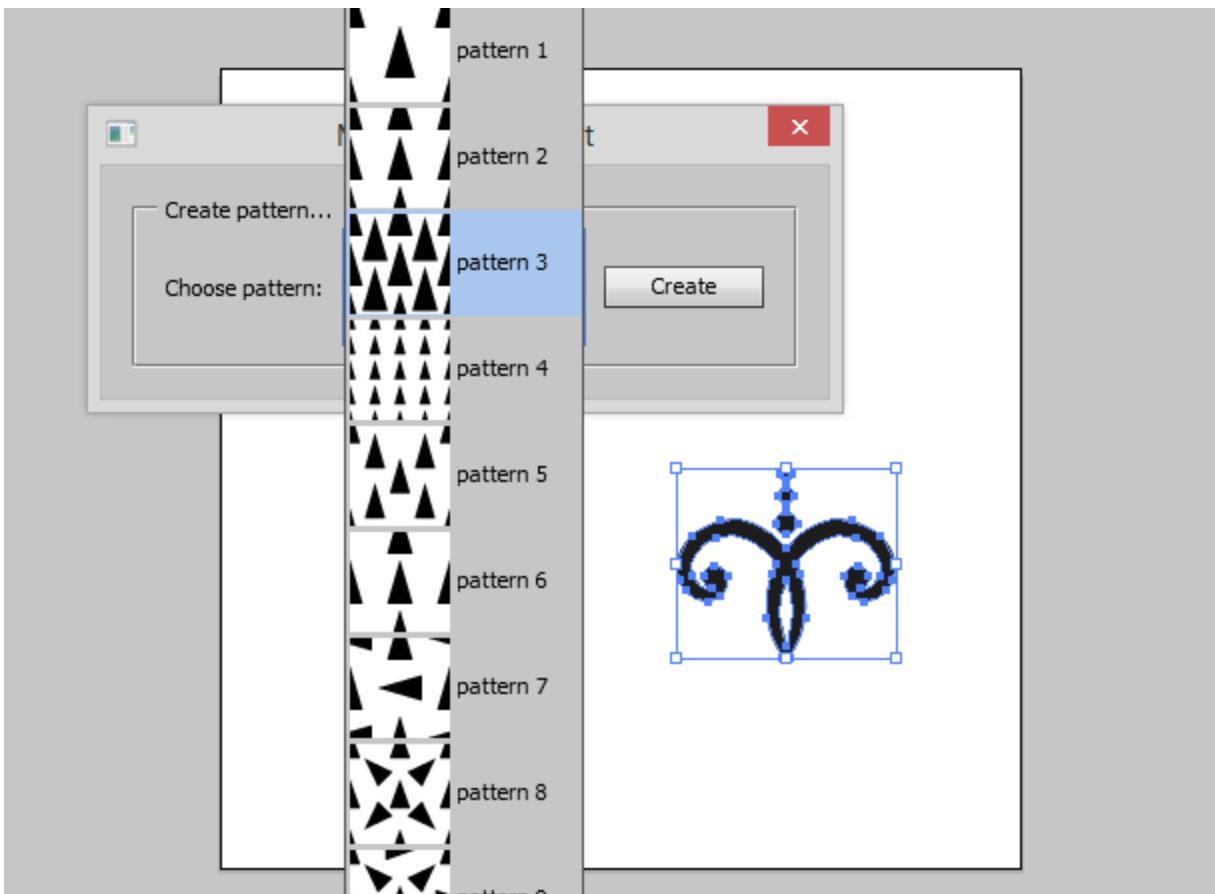
Usage in Adobe Illustrator

Open or create any vector illustration. You can also use *sample.eps* file from your archive.

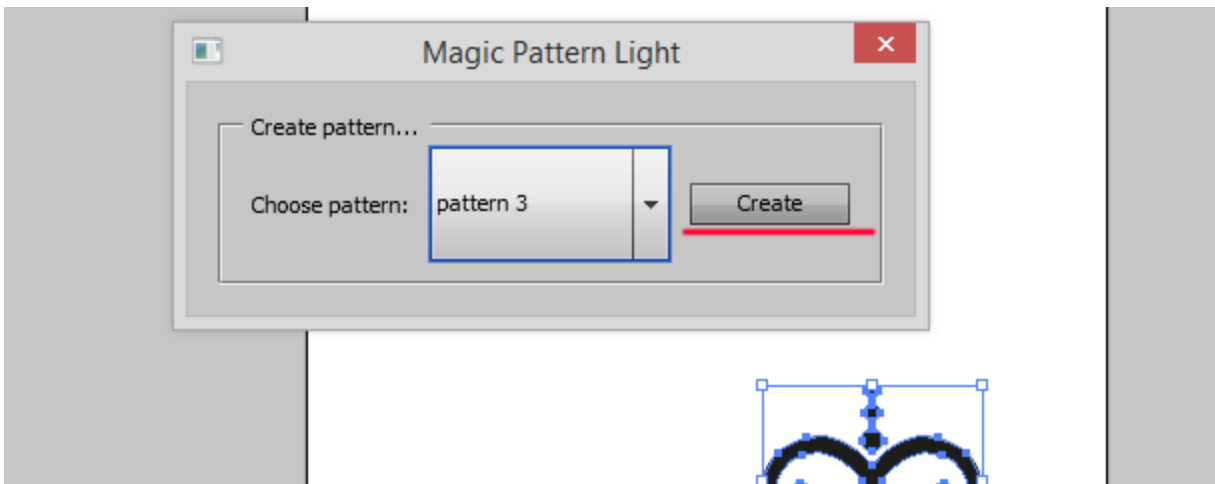
Select any object (group of objects) on the Artboard and run the script Magic Pattern Light. You will get a script window.



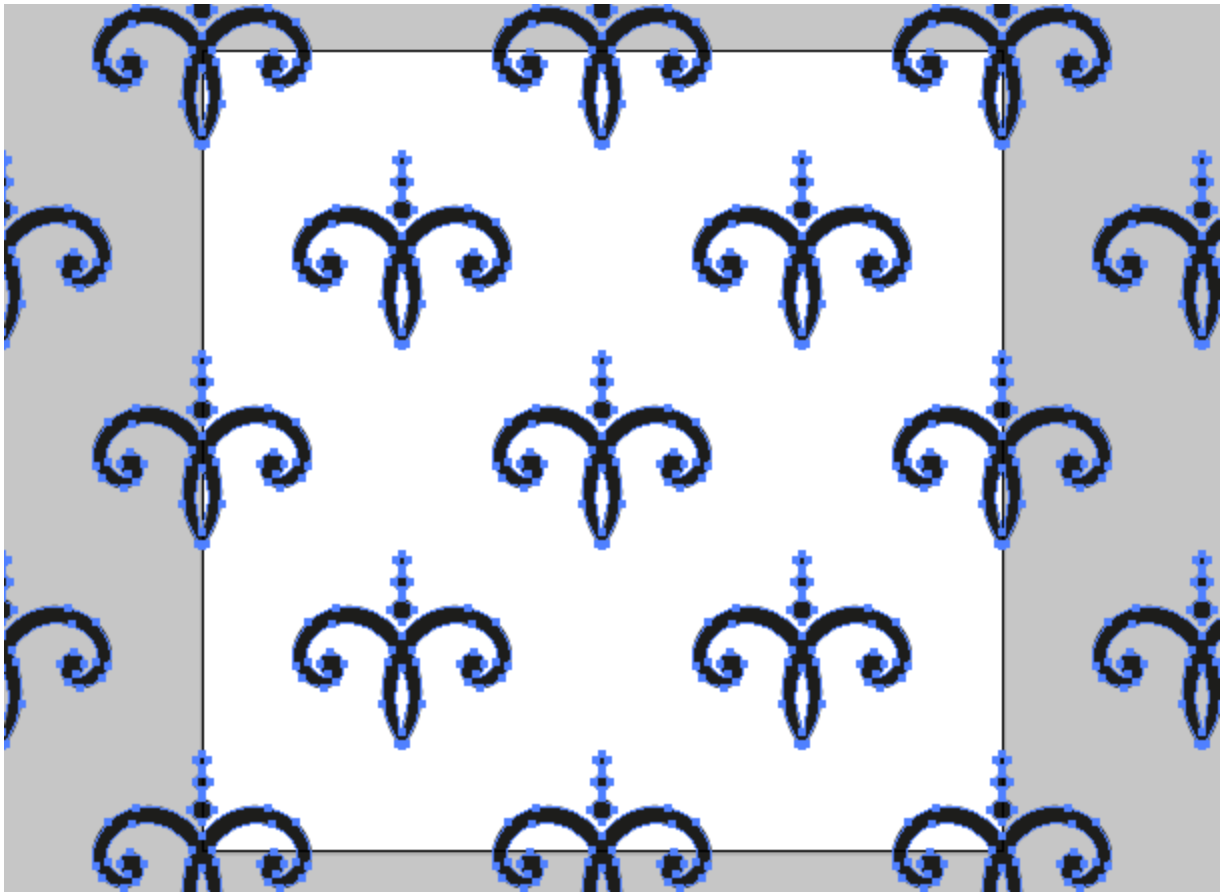
Choose any template in drop down menu.



Then Press the "Create" button.



The script will create the pattern.



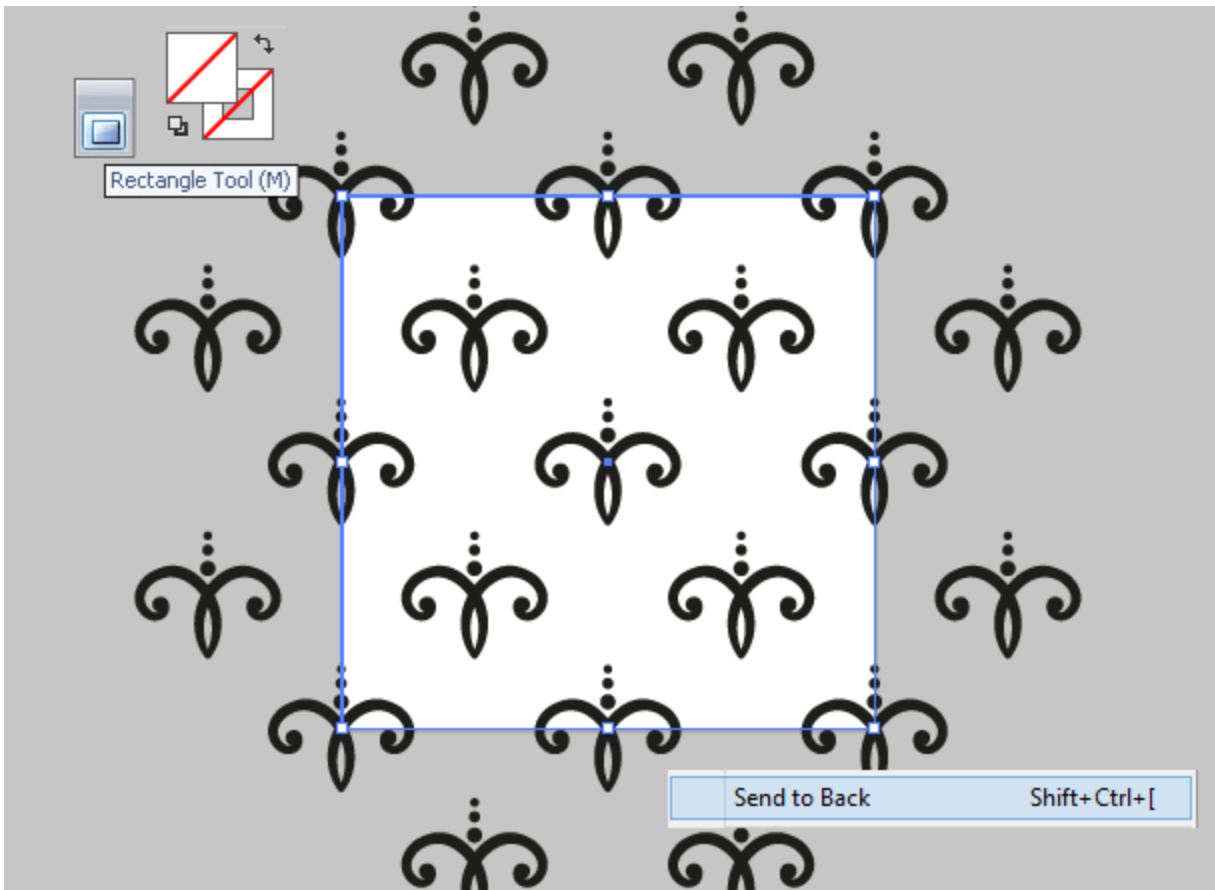
If you want to crop your pattern use Pathfinder Panel or [Magic Eraser Script](#) which automatically cuts and deletes vector objects outside Artboard.

You can buy Magic Eraser script for only **\$ 5** right now!

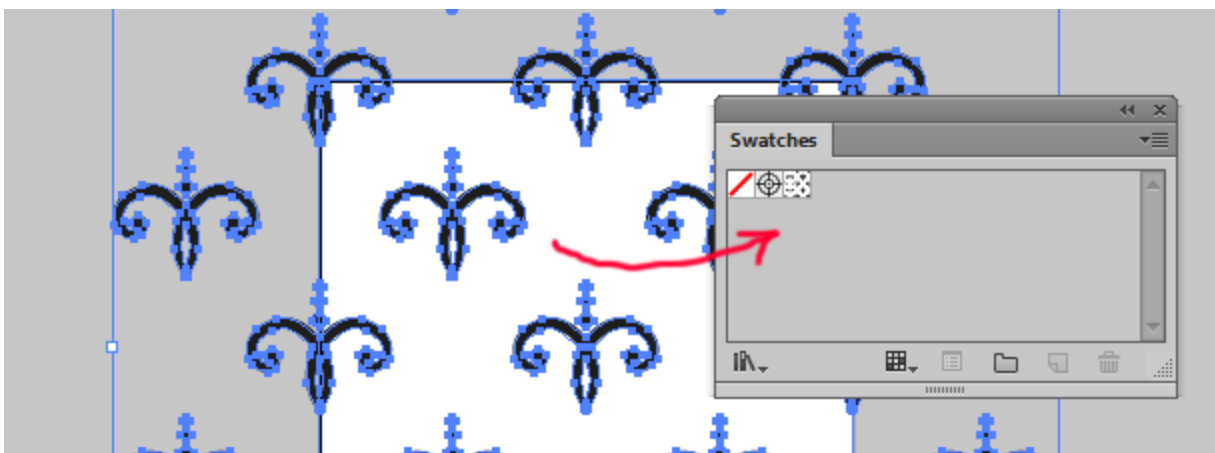
Visit our website: **mai-tools.com**

Also you can use Clipping Mask to hide vector objects outside Artboard.

If you want to add your pattern to Swatches Panel draw a rectangle with the same dimensions as the Artboard. This rectangle should be without fill and stroke. Finally sent it to back.



Then select all (Ctrl+A) and drag and drop to the Swatches Panel. You will get new pattern swatch.



Contact

Feel free to write support@mai-tools.com

Website mai-tools.com