

# Magic Eraser

Adobe Illustrator script



**User Guide**

# Introduction

Magic Eraser is a script for Adobe Illustrator which automatically cuts and deletes vector objects outside Artboard.

Quickly and easily delete paths and shapes outside Artboard, while not affecting your artwork inside artboard. Keeps illustrations editable after usage with accurate and clean results.

Perfect for cropping seamless patterns and vector illustrations for microstocks.

Useful for deleting graphic garbage on margins.

Fully automatic process. No need to know anything. Save yourself time and stress. Just run Magic Eraser Script and enjoy.

Compatibility: Adobe Illustrator CS5, Adobe Illustrator CS6, Adobe Illustrator CC

Script version is universal for Windows and Macintosh OS.

## Warning

Magic Eraser script operates with simple vector shapes and paths. It won't touch Blends, Live Paint Groups, Brushes, Symbols, Text Fields, Meshes or other complicated objects. Please expand your vector artwork (Object > Expand or Expand Appearance) before running the script.

Gradient Fills can be changed to default settings after script work.

Strokes can be joined after cutting and will be better expand them too.

The script can freeze your computer if your machine runs slowly. Also may require additional time to run if your vector artwork consists of many large objects.

To avoid incidents, save your vector artwork in separate file before running the script.

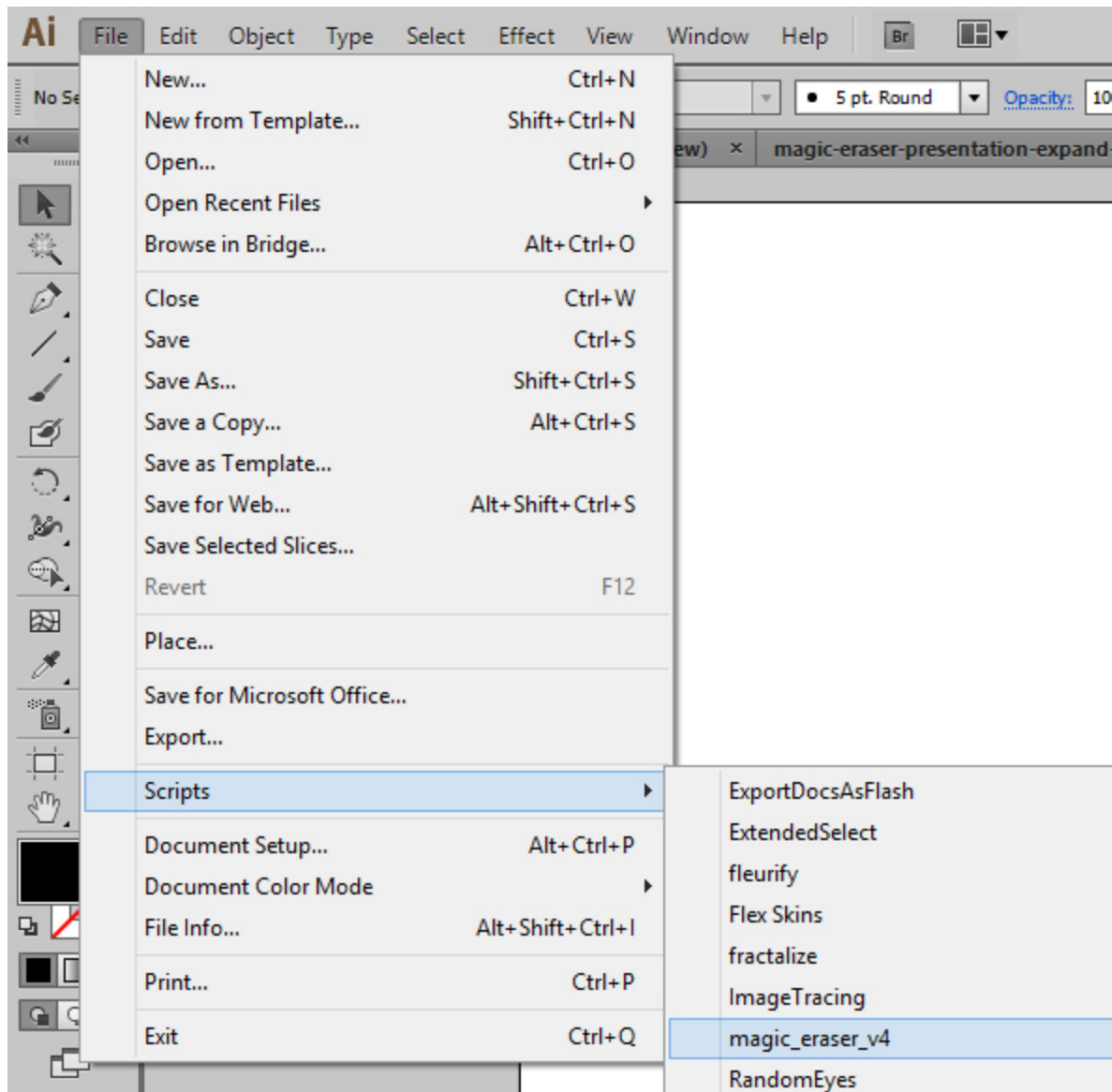
# Installation

Take the script file (*magic\_eraser\_v4.jsx*) and drop it to the script folder of your Adobe Illustrator. Location of the script folder depends on your Adobe Illustrator version and system configuration.

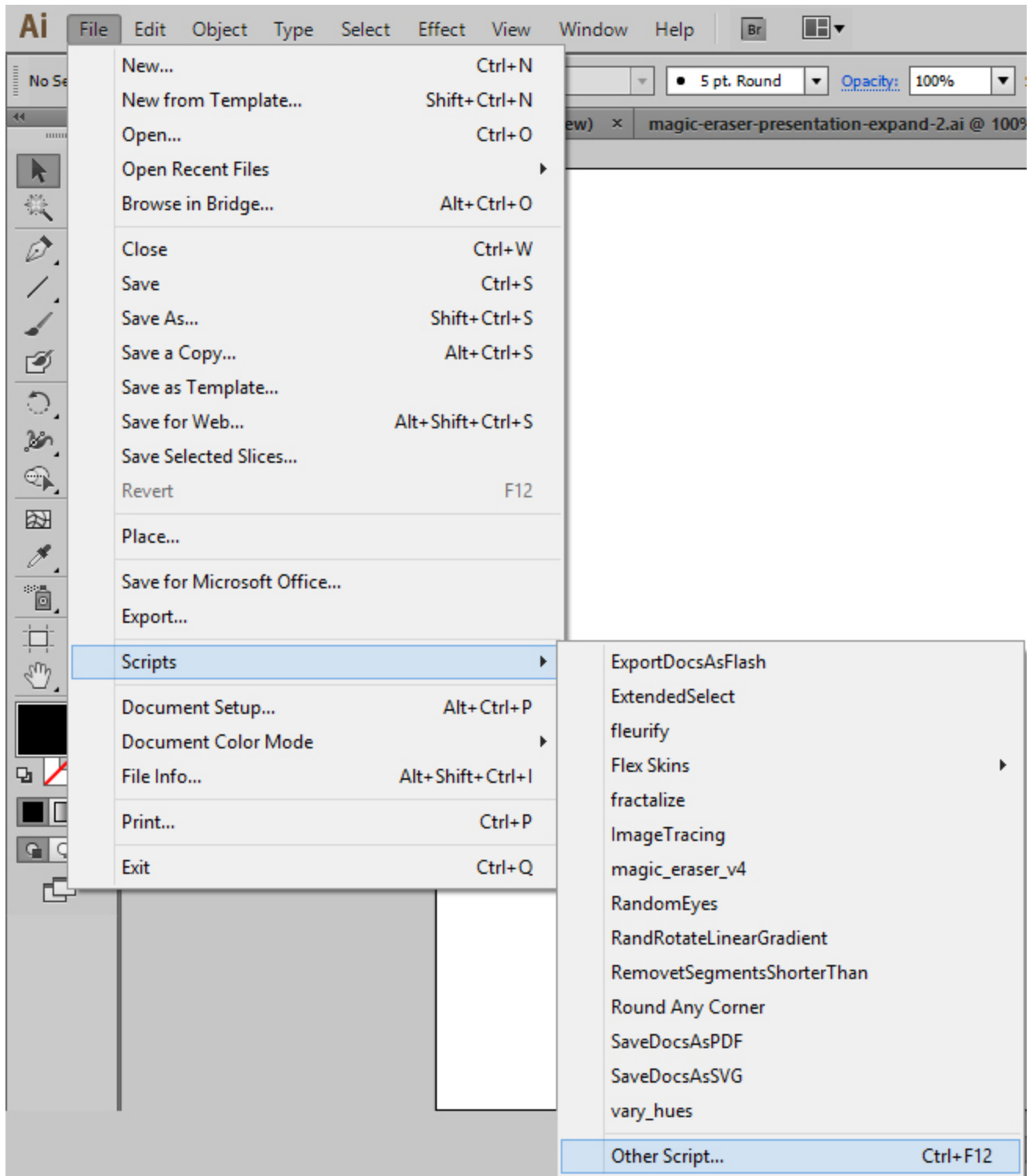
For example, for Windows Adobe Illustrator CS6 (English version) it can be:  
*C:\Program Files\Adobe\Adobe Illustrator CS6 (64 Bit)\Presets\en\_GB\Scripts*

For Adobe Illustrator CS5 (English version) for Windows it can be:  
*C:\Program Files\Adobe\Adobe Illustrator CS5\Presets\en\_GB\Scripts*

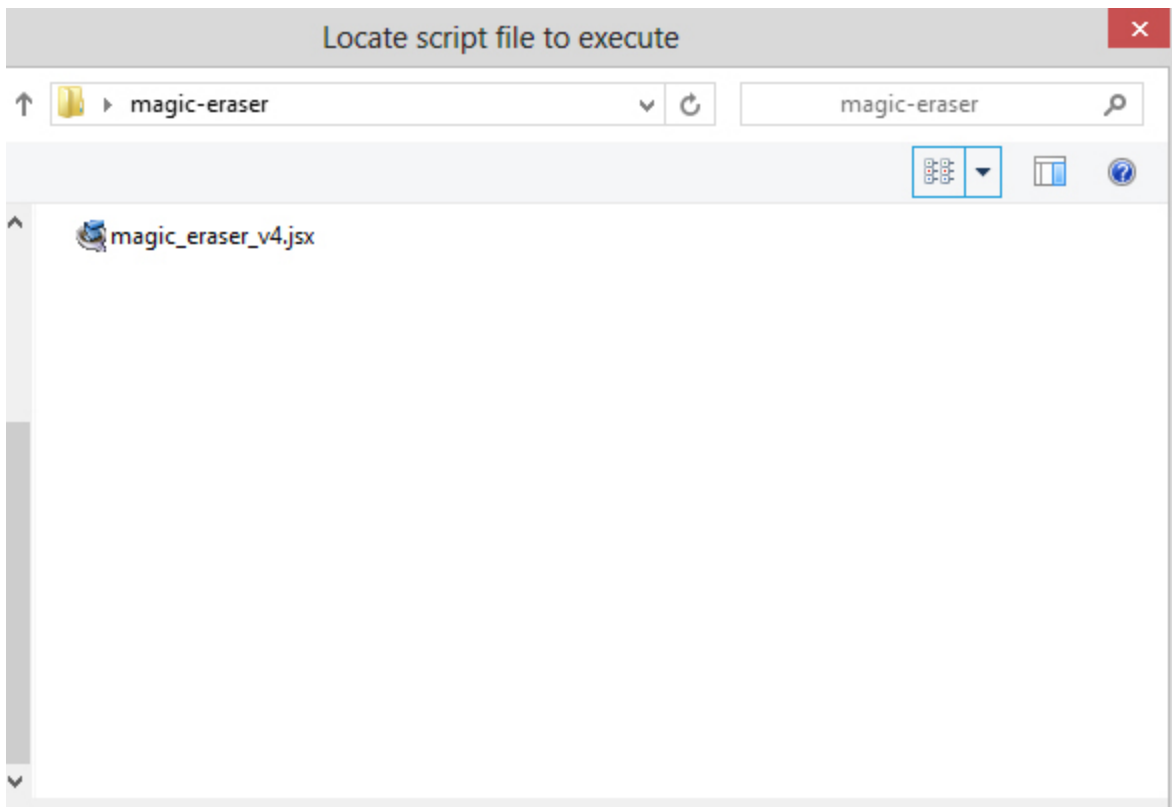
Then run Adobe Illustrator. You can find the script in the main menu (*File > Scripts > magic\_eraser\_v4*)



You can also run the script without installation. Go to *File > Scripts > Other Script* (Ctrl+F12).



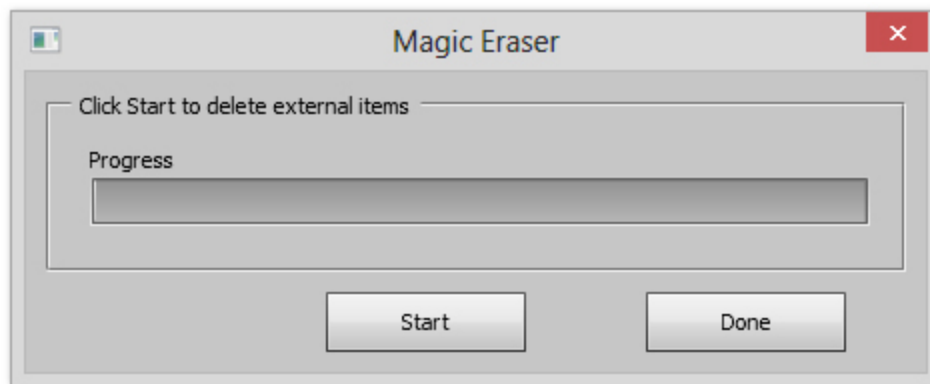
Then open the script file on your computer.



## Usage for Adobe Illustrator CS6 and CC

Open or create any vector illustration. You can also use *sample-vector.eps* file from your archive.

Run the script Magic Eraser. You will get a script window.



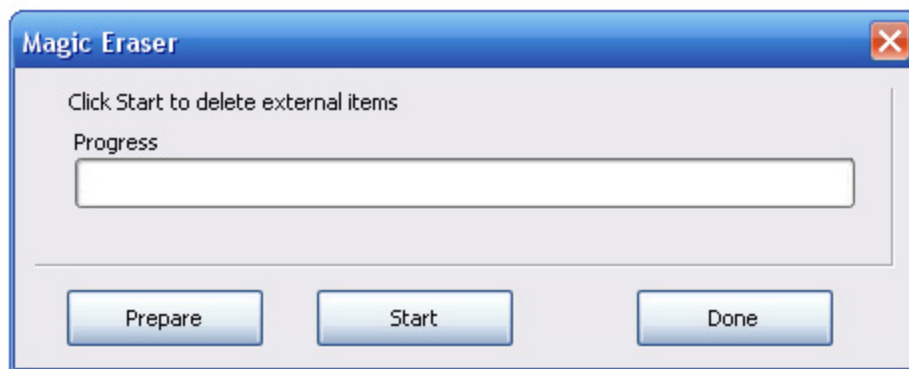
Press the "start" button in the script window. The script will cut and delete all vector shapes and paths outside Artboard.



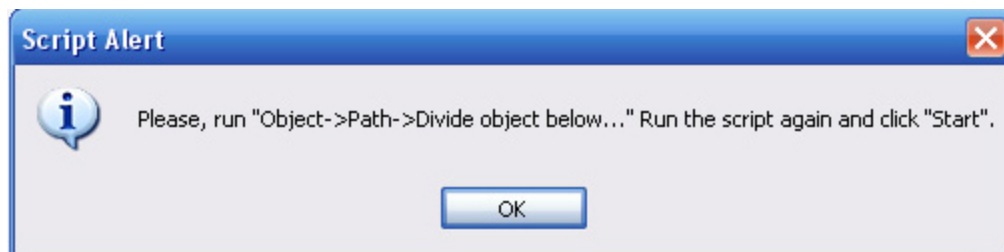
## Usage for Adobe Illustrator CS5

Open or create any vector illustration. You can also use *sample-vector.eps* file from your archive.

Run the script Magic Eraser. You will get a script window.

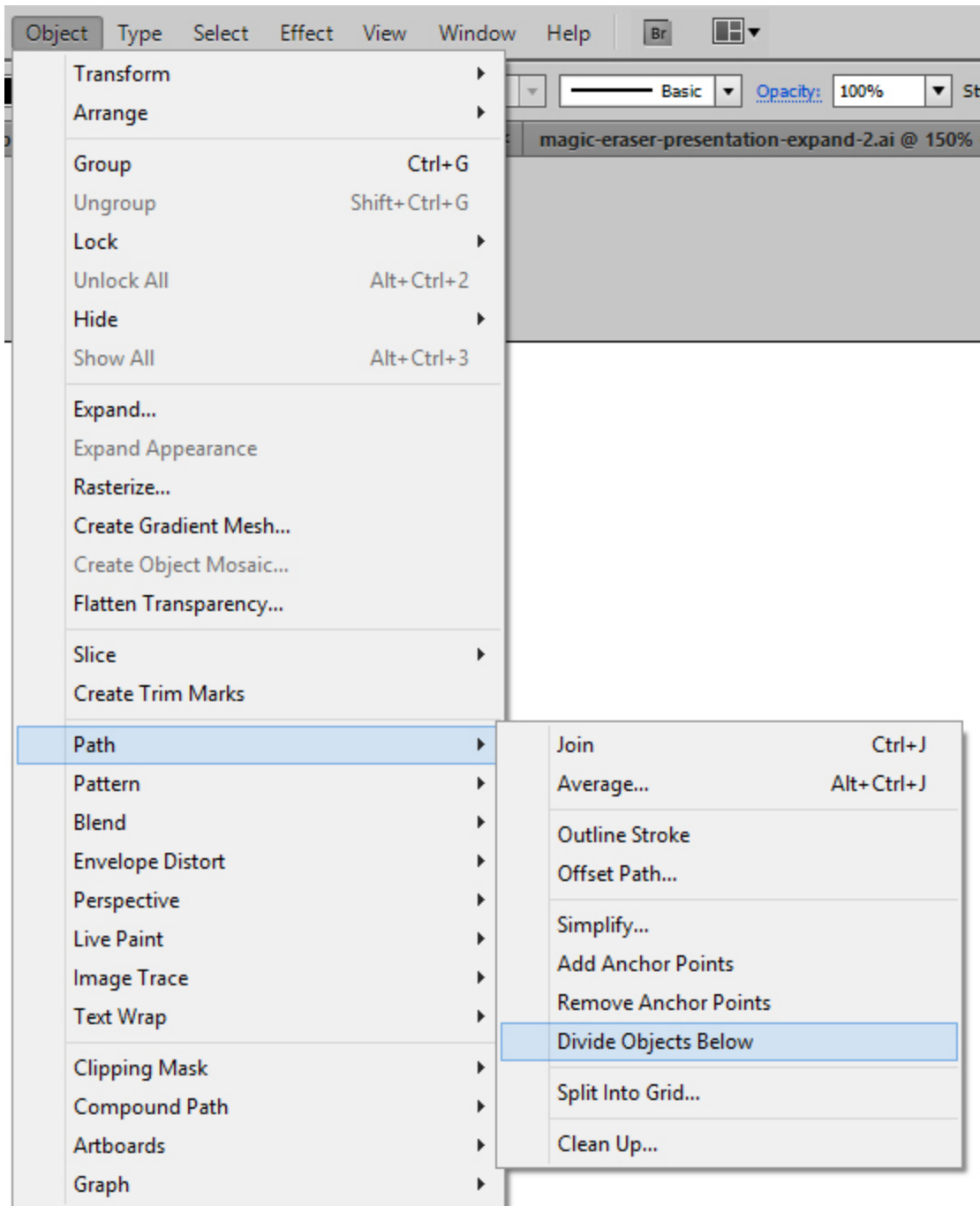


Press the "prepare" button. The script should start working and you should get a notification.

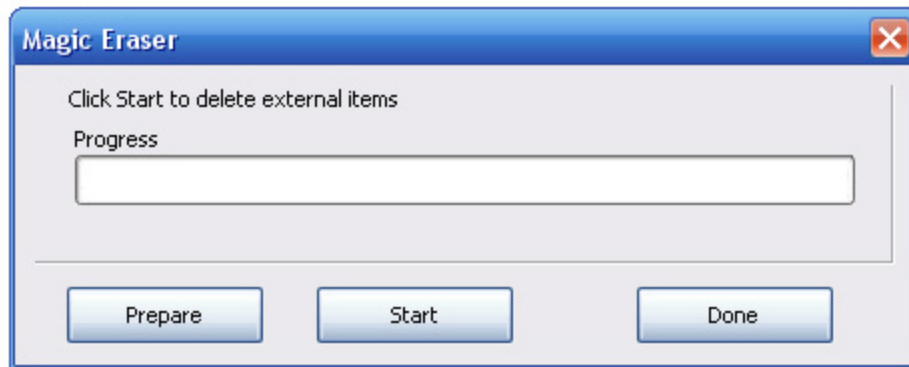




Then go to menu *Object > Path > Divide Objects Below*.



After this command, run the script Magic Eraser again. Press the "start" button in the script window.



The script should then delete all vector shapes and paths outside of Artboard.



# Contact

Feel free to write [support@mai-tools.com](mailto:support@mai-tools.com)